

Hydroma® Quality Trimming Layers

Cutting boards for digital cutting systems

Efficiency and economy play a major role in the production of leather, textile and paper products. To improve cutting process, we offer various cutting layers for automated flatbed and CNC cutters.

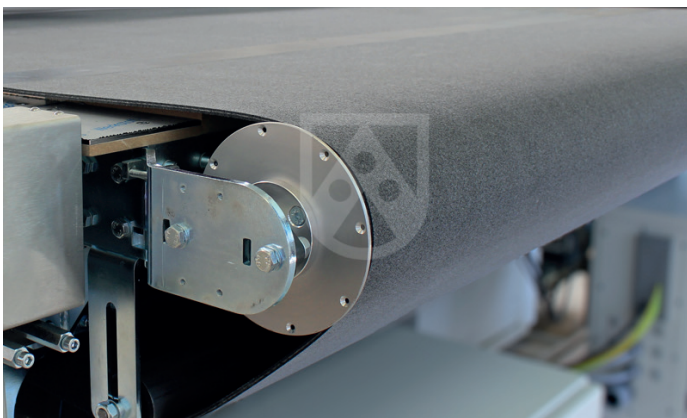
Areas of application

Our trimming layers can be used for both flatbed and CNC cutters. Our products are primarily used in the industries listed below:

- Footwear industry
- Leather-working industry
- Automotive industry
- Textile industry
- Furniture industry
- Paper industry



Trimming layers made of plastic or needle-punched nonwoven for efficient and economical cutting using flatbed cutters.



For CNC cutters with a circumferential conveyor, we can provide reinforced trimming layers with a long service life.



Long service life

Our trimming layers offer a long service life – even for a high number of cutting processes – owing to the composition of the material and the different geometric connections. The special shape of the perforations in Hydroma® HY-107 VacuAir prevents premature closure, thus increasing service life.



Knife-friendly

The composition of our cutting boards (for both flatbed and CNC cutters) protects the cutting tools and ensures a long service life.



Different colours

The cutting boards are available in different colours to support automatic scanning of the material on the board (high contrast).



High-quality results

The cutting boards make for precise and clean cut edges, thus ensuring high-quality cuttings.



Easy handling

Both our needle-punched nonwoven and plastic underlays are easy to install on the flatbed cutters. The cutting board is easy to bond using different geometric shapes to connect the trimming layers for CNC cutters with a circumferential conveyor.

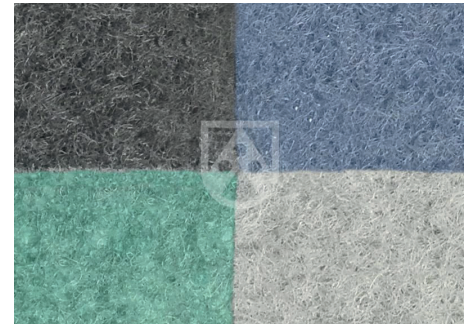
Application for flatbed cutter

Our needle-punched nonwoven trimming layers (Hydroma® HY-104 Grey and HY-105 Black) are especially well-suited for plotting leather, foams, plastic materials or foils using oscillating impact knives. We provide variants of trimming layers made of needle-punched nonwoven as listed below:

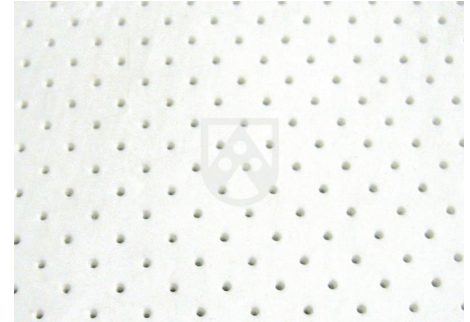
	Colour	Thickness	Width	Length
Hydroma® HY-104 Grey	Grey	4.5 mm	1,600 mm	Variably cut-to-size or delivered on roll
Hydroma® HY-105 Black	Black	2.5/4.5/3 mm	1,600 mm	Variably cut-to-size or delivered on roll

Our product range also includes perforated plastic table-top boards, which are ideal for flatbed cutters using circular knives. The special shape of the holes in the Hydroma® HY-107 VacuAir material prevents the premature closure of the perforation.

	Colour	Centre hole distance	Thickness	Length
Hydroma® HY-107 VacuAir	White	5 mm	3 mm, other thicknesses on request	Cut to size in accordance with customer requirements up to a size of 3,000 x 1,500 mm



Trimming layers made of needle-punched nonwoven (Hydroma® HY-104 Grey and HY-105 Black)



Perforated plastic table tops (Hydroma® HY-107 VacuAir)

Application for CNC cutters with circumferential conveyor

In addition to cutting boards for flatbed cutters, we also provide trimming layers for CNC cutters with circumferential conveyor. The reinforced backing increases the service life of the conveyor, as the material composition reduces expansion and wear during cutting.

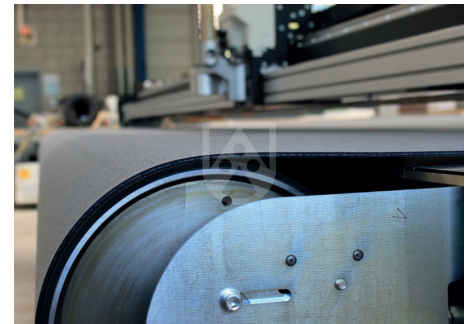
We would be glad to deliver the connections in various geometric shapes, see example in the picture. The connection guarantees easy bonding of the ends and good handling for significant time savings. In addition, the good fit of the connectors guarantees a smooth production process and a long service life.

Of course, we will cut the board according to your requirements.

We offer the variants listed below:

	Colour	Thickness	Width	Length
Hydroma® HY-126 Grau HP conveyor	Grey	2.5/3/4 mm	Variably cut-to-size up to 2,000 mm	Variably cut-to-size or delivered on roll
Hydroma® HY-125 Grün conveyor	Green	3/4 mm	Variably cut-to-size up to 3,100 mm	Variably cut-to-size or delivered on roll

Neben den Schneidunterlagen bieten wir Ihnen eine große Auswahl an qualitativ hochwertigen Stanz- und Schneidunterlagen. Nähere Informationen dazu finden Sie bei [Röchling Industrial Ruppertsweiler GmbH](#).



The cutting boards for CNC cutters contribute to achieving optimum cutting results and at improve your production processes at the same time.



Connecting the cutting board using a Christmas Tree is easy to handle and facilitates bonding.

Röchling Industrial. Empowering Industry.
www.roechling.com/industrial

Röchling Industrial Ruppertsweiler GmbH
 Lemberger Str. 101 | 66957 Ruppertsweiler | T +49 6395 9222-0 | info@roechling-hydroma.com

